

EP2GD

Stainless steel scales "Easy Pesa 2GD" series, for ATEX 1, 21, 2, 22 zones



Fully stainless steel bench scales, for specific use in ATEX hazardous areas. Powered by a long lasting rechargeable battery which allows an easier installation directly where it's needed. These scales don't need a power supply socket in dangerous zone nor ATEX proof power supply cables. Provided with the ATEX declaration of conformity. Ex II 2G IIC T4 Gb X and Ex II 2D IIIC T197°C Db X protection.

Working in cooperation with:

TAMTRON AS

VESTVOLLVEIEN 30B - 2019 - SKEDSMOKORSET - NORWAY
Tel. +47 64 83 67 50
post@tamtron.no www.tamtron.no

**The best solution
for advanced industrial
applications**

PLATFORM FEATURES

- Approved "single point" STAINLESS STEEL load cell according to OIML R60 standards with protection against dust and water splashes according to IP67 standards.
ATEX approved load cell with ATEX protection:
ATEX II 1G Ex ia IIC T6 (Ta -20÷+40°C) TX (Ta -20÷+65°C) Ga.
ATEX II 1D Ex ta IIIC TX°C (Ta -20÷+40°C) TX°C (Ta -20÷+65°C) Da IP65.
- Structure, enclosure and loading plate made in AISI304 satin finish stainless steel.
- Adjustable levelling feet with plastic over shoe.
- Supplied with support column, height:
 - 500 mm in the "Q" models;
 - 700 mm in the "X" models.
- Length of connection cable to the indicator: 3m.

WEIGHT INDICATOR FEATURES

- IP68 Weight indicator for ATEX zones with protection methods according to:
ATEX II 2(2)G Ex ib [ib Gb] IIC T4 Gb for gases.
ATEX II 2(2)D Ex tb [ib Db] IIIC T197°C IP65 Db for dust.
- EC-Type-Examination certificate according to Annex III (ATEX directive). CE-M approvable (OIML R-76 / EN 45501).
- Waterproof 17-key numerical and functional keyboard.
- LCD display with 6 25-mm high contrast digits, clearly visible even in poor lighting conditions and with low temperatures, and with 6 LEDs for showing the active functions.
- Up to 10.000e or multirange 3 x 3000e @ 0,3 µV/d in CE-M approved version for legal for trade use.
- Up to 1.000.000 displayable divisions with internal resolution up to 3.000.000 points.
- A/D 24-bit sigma-delta conversion, up to 100 conv./sec. autoselect.
- Power supply through external battery pack with 160h operating time. An extra battery pack for continuous use (24/7) is available as option. EU, UK, US, AU plugs included as standard.
- Charger included in the supply.

SCALE FUNCTIONS

- SCALE FUNCTIONS
 - Zeroing
 - Automatic tare
 - Presetable tare
 - Selectable function command
 - On/off switching.

SELECTABLE FUNCTIONING MODE

- High Resolution Weighing x 10
- Net/Gross or lb/kg conversion
- Weight totalization
- Formula weighing
- +/- Checkweighing
- Counting (Max. resolution of 1.500.000 divisions)

CERTIFICATIONS

- The price includes the ATEX declaration of conformity (DCATEX2GD) and the load cell certificate of conformity (CCATEX).

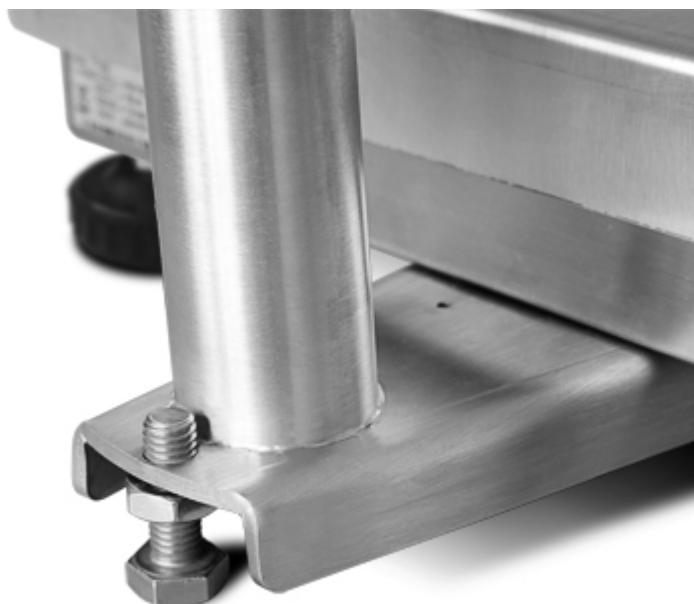
DETAIL 1



DETAIL 2



DETAIL 3



VERSIONS

Available versions

Codice	Piatto Max (mm)	Max (kg)	d (g)	M (g)*	M 2R (g)*	d HR (g)*
EPQI2GD15B	400x400	15	2	5	2/5	1
EPQI2GD30B	400x400	30	5	10	5/10	2
EPQI2GD60B	400x400	60	10	20	10/20	5
EPQI2GD150B	400x400	150	20	50	20/50	10
EPXI2GD60B	600x600	60	10	20	10/20	5
EPXI2GD150B	600x600	150	20	50	20/50	10
EPXI2GD300B	600x600	300	50	100	50/100	20

(*) These divisions are obtainable only with the relative options



“YOUR WORLDWIDE PARTNER FOR WEIGHING,”

DINI ARGEO
FRANCE sarl
France

DINI ARGEO
GMBH
Germany

DINI ARGEO
UK Ltd
United Kingdom

DINI ARGEO WEIGHING
INSTRUMENTS Ltd
China

DINI ARGEO
OCEANIA
Australia



COMPANY HEADQUARTERS

Via Della Fisica, 20
41042 Spezzano di Fiorano - Modena - Italy
Tel. +39.0536 843418

TAMTRON AS

VESTVOLLVEIEN 30B - 2019 - SKEDSMOKORSET - NORWAY

Tel. +47 64 83 67 50

post@tamtron.no www.tamtron.no

SALES AND TECHNICAL ASSISTANCE SERVICE