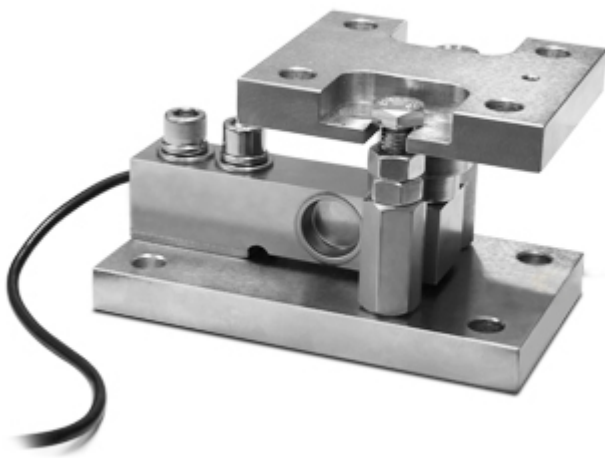


KSBC2

Nickel-plated kit "KSBC" series, for shear beam SBT/SBK/SBX load cells



Mounting kit for shear beam load cells SBT/SBK/SBX series, up to 2.500kg. Suitable for weighing of hoppers, tanks, platforms, etc.

ADVANTAGES:

- Nickel-plated construction
- Higher plate with spherical joint, for optimal weighing precision
- Anti-overturn
- Locking/bypass system for facilitated transport and maintenance
- Quick installation/removal of the load cell (even if full- loaded)

Working in cooperation with:

TAMTRON AS

VESTVOLLVEIEN 30B - 2019 - SKEDSMOKORSET - NORWAY
Tel. +47 64 83 67 50
post@tamtron.no www.tamtron.no

**The best solution
for advanced industrial
applications**

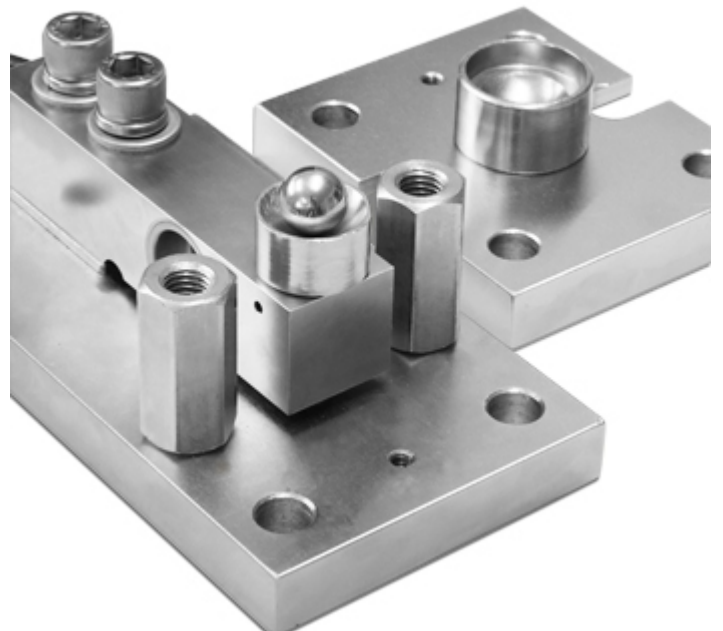
LOAD CELLS KIT: TECHNICAL FEATURES

- For shear-beam load cells, SBT/SBK/SBX series, from 300 to 2500 kg
- Nickel-plated manufacturing
- Self-centering spherical joint, for precise weighing
- Locking system for cell protection during transport or maintenance of the structure
- Limit nuts and screws, adjustable
- Anti-overturn (within the limits declared)

DETAIL 1



DETAIL 2



DETAIL 3



“YOUR WORLDWIDE PARTNER FOR WEIGHING,”

DINI ARGEO
FRANCE sarl
France

DINI ARGEO
GMBH
Germany

DINI ARGEO
UK Ltd
United Kingdom

DINI ARGEO WEIGHING
INSTRUMENTS Ltd
China

DINI ARGEO
OCEANIA
Australia



COMPANY HEADQUARTERS

Via Della Fisica, 20
41042 Spezzano di Fiorano - Modena - Italy
Tel. +39.0536 843418

TAMTRON AS

VESTVOLLVEIEN 30B - 2019 - SKEDSMOKORSET - NORWAY

Tel. +47 64 83 67 50

post@tamtron.no www.tamtron.no

SALES AND TECHNICAL ASSISTANCE SERVICE